

## NOTA BREU

**Re-instatement of the species name *Callirhytis erythrosoma* (Dettmer, 1933), with comments on other *Callirhytis* species (Hymenoptera: Cynipidae)****Restitució del nom de l'espècie *Callirhytis erythrosoma* (Dettmer, 1933), amb comentaris sobre altres espècies de *Callirhytis* (Hymenoptera: Cynipidae)**

James A. Nicholls \* &amp; Juli Pujade-Villar \*\*

\* CSIRO, Australian National Insect Collection. Clunies Ross Street. Acton, ACT 2601, Australia. A/e: james.nicholls@csiro.au

\*\* Department of Animal Biology. Barcelona University. 08028 Barcelona, Catalonia. A/e: jpujade@ub.edu

Corresponding author: Juli Pujade-Villar. A/e: jpujade@ub.edu

Rebut: 05.03.2020. Acceptat: 14.03.2020. Publicat: 31.03.2020

Förster (1869) first described *Callirhytis* to include some European gall forming cynipid species that uniquely present transversely striated sculpturing on the scutum and malar sulcus. Since then some authors, without considering these diagnostic characters, have treated *Callirhytis* as a subgenus of *Andricus*: *Andricus* (*Callirhytis*) possessing simple tarsal claws, while the nominal subgenus *Andricus* (*Andricus*) having tarsal claws with a basal lobe (e.g. Mayr 1881; Ashmead 1885; Cameron 1893; Dalla Torre 1893; Kieffer 1897-1901). Later, Mayr (1902) restored the generic status of *Callirhytis* and Dalla Torre & Kieffer (1910) followed suit, as the tarsal claws are not a diagnostic character in *Callirhytis* (Nieves-Aldrey 1992). Weld (1922, 1926, 1952) included many Nearctic species in this genus, again ignoring the diagnostic characters given by Förster (1869), and as result of this *Callirhytis* has become a very chaotic genus (herein termed *Callirhytis* «sensu lato»). Melika & Abrahamson (2002) pointed out that of the 115 Nearctic species of *Callirhytis* named in Burks (1979), only 15 are *Callirhytis* «sensu stricto». Consistent with this, in recent years two new genera (*Zapatella* Pujade-Villar & Melika, 2012 and *Melikaiella* Pujade-Villar, 2014) have been described to include some of these incorrectly assigned Nearctic *Callirhytis* (Pujade-Villar *et al.* 2012, 2014), and further revisionary work on Nearctic *Callirhytis* is ongoing. According to Péntzes *et al.* (2018), a single *Callirhytis* species also occurs in the Eastern Palaearctic (*C. glanduliferae* Monzen, 1953).

*Callirhytis* is represented in the Western Palaearctic region by six species (Pujade-Villar *et al.*, 2005): four are present in western and central Europe (*C. bella* (Dettmer, 1930); *C. erythrocephala* (Giraud, 1959); *C. glandium* (Giraud, 1959) and *C. rufescens* (Mayr, 1882)), and two species are known from the Caucasus region (*C. comantis* Belizin & Maisuradze, 1961 and *C. reticulatus* Belizin & Maisuradze, 1961). The sexual generations of the European species induce summer galls in twigs (rarely in buds) of oaks belonging to *Quercus* section *Quercus* and the asexual generations induce galls inside acorns of *Quercus* section *Cerris* oaks; larvae can

diapause in these asexual galls for between one to eight years (Barbotin† *pers. comm.*, after Nieves-Aldrey 1992).

Both generations are known for *C. glandium* and *C. rufescens* following Barbotin's experimental studies, published by Nieves-Aldrey (1992). *Callirhytis comantis* is known only from its sexual generation and *C. reticulatus* from its asexual generation, and this pairing could represent alternate generations of the same biological species (Maisuradze 1961). The taxonomic status of *C. bella* is uncertain. This species, known only from females of the suspected sexual generation, emerges in April-May from cryptic galls located inside small buds on *Q. robur* and *Q. petraea*. It has rarely been collected, only being known from the Netherlands and British Islands (Nieves-Aldrey 1992) and France (new record; galls and adults collected from «Reserve Naturelle Forêt de la Massane/Banyuls Sur Mer»). Morphologically it is very similar to the sexual generation of *C. glandium*, from which it can only be distinguished through having smaller and more separated antennae as well as by slight differences in pronotal and mesopleural sculpturing (Nieves-Aldrey 1992). However, the sexual generation of *C. glandium* emerges much later in late July and August. This early emergence of *C. bella* is more typical of asexual forms of European *Callirhytis*, although its host plant association and morphology imply it is a sexual generation. Finally, *C. hartigi* Förster, 1869 was proposed as the possible sexual generation of *C. erythrocephala* by Nieves-Aldrey (1992) and was formally synonymized with *C. erythrocephala* by Pujade-Villar *et al.* (2005) after unpublished studies by both Folliot (in 1964-1967) and Barbotin† (in 1971-1986) independently closed this species' life-cycle.

However, the asexual generation of *C. erythrocephala* as defined by Nieves-Aldrey (1992) presents some taxonomic issues. Dettmer (1933) described two asexual species: *Callirhytis erythrosoma* and *C. erythrostoma*. Both were synonymized as being the asexual generation of *C. erythrocephala* (Giraud, 1859) by Nieves-Aldrey (1992), although this was contrary to Barbotin's unpublished experimental notes stating that both species induce different asexual galls. *Cal-*

*lirhytis erythrocephala* (= *C. erythrostroma*) produces a coalescent and hard almond-shaped gall within the endocarpium of an acorn resulting from the fusing of multiple unilocular larval cells into one large agglomerate, while in contrast *C. erythrosoma* induces a hemispherical group of gall chambers which can usually be separated into individual larval chambers (Pujade-Villar *et al.*, 2005). The asexual females of both forms are similar but according Barbotin's† notes can be easily distinguished: females reared from galls of *C. erythrosoma* are red-yellowish while those reared from the galls of *C. erythrocephala* have a black mesosoma. One way to resolve the status of these species requires experimental rearings that follow individuals through multiple generational cycles, which is a long and difficult process. Alternatively, a simpler method examining DNA sequence variation can be employed; recent work has demonstrated the efficacy of this method for discriminating among sister species in cynipids and matching otherwise unpaired generations (e.g. Stone *et al.* 2008; Nicholls *et al.* 2012, 2018).

To this end, DNA was extracted from two adult individuals of each asexual European *Callirhytis* species previously recognised in the literature as being morphologically distinct: *C. erythrostroma*, *C. erythrosoma*, *C. glandium* and *C. rufescens*. The adults of *C. erythrostroma* and *C. erythrosoma* were reared from *Q. cerris* acorns collected at the same locality, St Malo in north-western France, so provide a test of the genetic distinctiveness of these two morphotypes in sympatry. In addition, five larvae dissected from *Q. cerris* acorns in Hungary (two individuals) and Denmark (three individuals) were also extracted. A 433 base pair section of the mitochondrial cytochrome *b* gene was sequenced for each individual, as this gene has been demonstrated to provide species-level resolution within cynipids (Nicholls *et al.* 2012; Tang *et al.* 2016a, b; Cerasa *et al.* 2018; Nicholls *et al.* 2018; Tang *et al.* 2020). Variation within and between putative species was calculated, and a neighbour-joining tree was constructed using HKY genetic distances and rooted using the Nearctic species *Melikaiella tumifica* (GenBank accession MG821060).

The genetic results support the distinctiveness of the two species *C. erythrocephala* (= *C. erythrostroma*) and *C. erythrosoma*, as suggested by Pujade-Villar *et al.* (2005), although they are each other's closest relative (Figure 1). Variation between sympatric individuals of the two species averaged 2.4% (see Table 1), a value comparable to between-species variation both in other cynipid species (Nicholls *et al.* 2012; Cerasa *et al.* 2018; Nicholls *et al.* 2018) and among insects

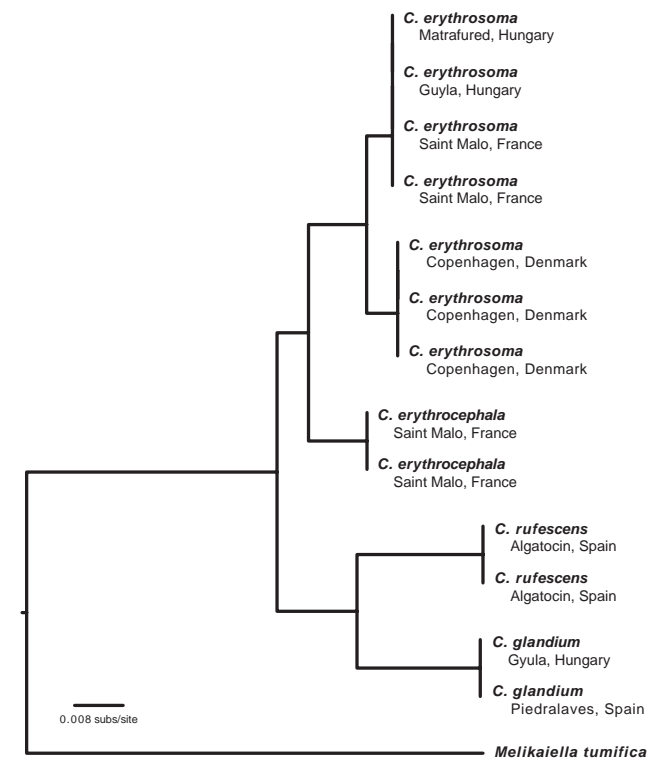


Figure 1. Neighbour-joining tree based upon cytochrome *b* gene sequences obtained from the four *Callirhytis* species present in Europe and with known asexual generations. Terminals are labelled with their species name and collection location.

in general (Hebert *et al.*, 2003). All the sequenced larvae appeared to be from the species *C. erythrosoma*, and within this species the divergence associated with geographically-separated samples was low (on average 0.5%; range 0-0.9%), again consistent with there being two genetically discrete species previously included in the *C. erythrocephala* complex. All new sequences are deposited in GenBank, accessions MT152275-MT152287.

In view of these results we formally re-instate the name *C. erythrosoma* to species rank. Additionally, following the discussion presented by Pujade-Villar *et al.* (2005), the sexual form of *C. erythrocephala* corresponds to the species originally described as *C. hartigi* whereas the sexual form of *C. erythrosoma* is the morphologically distinct but as yet undescribed generation illustrated in Figure 4 of Pujade-Villar *et al.* (2005). We note as well that these two sexual forms differ

Table 1. Pairwise genetic distances among the four *Callirhytis* species present in Europe and known from their asexual generations, based upon 433 base pairs of the cytochrome *b* gene using a HKY correction. Values on the diagonal indicate average percentage variation among individuals of the same species; off-diagonal values indicate between-species distances

	<i>C. erythrosoma</i>	<i>C. erythrocephala</i>	<i>C. rufescens</i>	<i>C. glandium</i>
<i>C. erythrosoma</i>	0.5	—	—	—
<i>C. erythrocephala</i>	2.4	0.0	—	—
<i>C. rufescens</i>	5.3	5.1	0.0	—
<i>C. glandium</i>	5.3	4.6	4.1	0.0

to a greater extent than the recognised species pair of *C. bella* and *C. glandium*.

To identify the European species (both sexual and asexual forms) we establish the following key:

- 1 Asexual females; robust specimens (body length 2.5-3.0 mm). Gena strongly broadened behind eye; head transverse, dull rugose; scutum with strong transverse irregular striae; galls exclusively in acorns on oaks belonging to *Quercus* section *Cerris* (*Q. cerris*, *Q. suber*, *Q. ilex*, *Q. macrolepis* and occasionally *Q. coccifera*) ..... 2
- Sexual females and males; non-robust specimens (body at most 2.5 mm). Gena slightly broadened behind eye; head rounded or taller than broad in front view, coriaceous, with less dull sculpture; scutum with more delicate transverse striae; galls in twigs or buds on oaks of *Quercus* section *Quercus* (*Q. faginea*, *Q. pubescens*, *Q. pyrenaica*, *Q. robur*, among others) ..... 5
- 2 Tarsal claws with basal lobe. Radial cell 3.0 times as long as broad; 2nd abscissa of radius slightly curved. Scutum with strong transverse regular striae. Body almost completely black or dark reddish brown. .... *C. glandium*
- Tarsal claws simple or with very weak basal lobe. Radial cell longer, 3.5 times as long as broad; 2nd abscissa of radius nearly straight. Scutum with less strong transverse striae, usually irregular, waved and/or with anastomoses in posterior 1/2-1/3. Body colour variable, from almost entirely reddish yellow to predominantly black ..... 3
- 3 Body yellow-red to amber. Frons and vertex microreticulate, without strong branched striae. Notauli complete, sometimes less distinct in anterior 1/3. Scutum with less marked regular transverse striae. Tarsal claws simple. Galls on *Q. suber* and *Q. ilex* ..... *C. rufescens*
- Body predominantly black or completely yellow-red. Frons and vertex dull rugose with strong striae. Notauli incomplete, invisible in anterior 1/3. Scutum with strong transverse waved, irregular rugae, with anastomoses posteriorly. Tarsal claws without or with very weak basal lobe. Galls on *Q. cerris* ..... 4
- 4 Mesosoma completely black. OOL subequal to LOL. Vertex with strong rugae, inter-ocellar area always with linear elements ..... *C. erythrocephala*
- Mesosoma red-yellowish. OOL longer than LOL. Vertex coriaceous sometimes with weak rugae, inter-ocellar area occasionally with linear elements ..... *C. erythrosoma*
- 5 Tarsal claws toothed, with an acute basal lobe ..... *C. bella* and *C. glandium* [*C. bella* emerge from inconspicuous bud galls and *C. glandium* from twigs]
- Tarsal claws simple or with blunt basal lobe ..... 6
- 6 Body with amber colour. Notauli complete, sometimes weakly impressed on the anterior part of the mesoscutum. Radial cell relatively short (3.1-3.3 times longer than wide). Males with large ocelli (OOL equal to 0.5 times the

diameter of a ocellus) and transfacial line much shorter than the height of a compound eye ..... *C. rufescens*

- Predominantly reddish-brown colour. Notauli incomplete, invisible on the anterior third of the mesoscutum. Radial cell longer (about 3.7 times longer than wide). Males with relatively smaller ocelli (OOL 0.9-1.2 times as long as the diameter of the lateral eye) and transfacial line almost equal to the height of a compound eye ..... 7
- 7 Head around 2.0 times as broad as long in dorsal view. Scutellar foveae separated by a wide central area. Females POL 1.5-1.6 times as long as OOL and F1 3.0 times as long as broad. Males with notauli reaching 2/3 the length of the mesoscutum and OOL shorter than diameter of lateral ocellus ..... *C. erythrocephala*
- Head broader, less transverse. Scutellar foveae separated by a point or a little carina. Females POL subequal to OOL and F1 around 2.1 times as long as broad. Males with notauli reaching 1/3 the length of the mesoscutum and OOL slightly longer than diameter of lateral ocellus ..... *C. erythrosoma*

Finally, we provide comment on the status of one further *Callirhytis* species, *C. cameroni*, a species known from leaf galls on *Q. salicifolia* (*Quercus* section *Lobatae*) in Panama (Medianero & Nieves-Aldrey 2014). As with most other Nearctic *Callirhytis*, it lacks the diagnostic characters of *Callirhytis* «sensu stricto»; it is currently classified as *Callirhytis* «sensu lato» only based on the apparently incorrect characters of Weld (1952). According to the original description, *C. cameroni* has reticulate sculpture on the third and following metasomal tergites, and such sculpturing never occurs in *Callirhytis* «sensu stricto». Reticulate or strongly alveolate metasomal sculpturing is rare in Nearctic Cynipini and only occurs in the genus *Melikaiella* Pujade-Villar, 2014. *Callirhytis cameroni* also shares other characters typical of *Melikaiella* (see Pujade-Villar *et al.*, 2014): lower facial carinae present only along the malar sulcus (carinae radiating from clypeus present in the entire malar area and extending on the lower face up to toruli in *Callirhytis*), a very strong irregular rugose sculpture on mesoscutum (not transversely carinated as in *Callirhytis*) with coriaceous interspaces (interspaces smooth and shiny in *Callirhytis*), circumscutellar carina (absent in *Callirhytis*) and mesopleuron having coriaceous reticulate sculpture (with transverse and interrupted striae in *Callirhytis*). The host plant of *C. cameroni* occurs on *Quercus* section *Lobatae* section as is the case with other *Melikaiella* species (sections *Quercus* and *Cerris* are hosts of true *Callirhytis*). Accordingly, we transfer *C. cameroni* to the genus *Melikaiella*, with the new name *Melikaiella cameroni* (Medianero & Nieves-Aldrey, 2014) **n. comb.**

## Acknowledgements

We thank François Barbotin<sup>(†)</sup>, José Luis Nieves-Aldrey, György Csóka and Simon Haarder for providing some of the specimens sequenced in this study. Also we thank George

NOTABREU

Melika (Plant Health Diagnostic NR Laboratory National Food Chain Safety Office) and an anonymous reviewer for their comments.

## Bibliography

- ASHMEAD, W. H. 1885. A Bibliographical and Synonymical Catalogue of the North American Cynipidae, with description of new species. *Transactions of the American Entomological Society*, 12: 291-304.
- BURKS, B. D. 1979. Superfamily Cynipoidea. P. 1045–1059 in: *Catalog of Hymenoptera in America North of Mexico. Symphyta and Apocrita (Parasitica)*. (eds. Krombein, K. V., Hurd, P. D., Jr., Smith, D. R. & Burks, B. D.). vol. 1. Smithsonian Institution Press, Washington, D.C.
- CAMERON, P. 1893. *A Monograph of the British Phytophagous Hymenoptera. (Cynipidae and Appendix)*. Ray Society Publications, 4: 1-248 p. + 19 plates.
- CERASA, G., LO VERDE, G., CALECA, V., MASSA, B., NICHOLLS, J. A. & MELIKA, G. 2018. Description of *Dryocosmus destefanii* new species (Hymenoptera: Cynipidae: Cynipini) from *Quercus suber* L. in Italy. *Zootaxa*, 4370: 535-548.
- DALLA TORRE, K. W., von. 1893. *Cynipidae. Catalogus Hymenopterorum hucusque descriptorum systematicus et synonymicus*. Vol. 2. Lipsiae, Sumptibus Guilelmi Engelmann: VIII + 1-140.
- DALLA TORRE, K. W. & KIEFFER, J. J. 1910. Cynipidae. *Das Tierreich*, 24. Berlin, Friedlander & Sohn, 35: 1-891 p.
- DETTMER, H. S. J. 1933. Die bislang bekannten Europäischen Arten der Gattung *Callirhytis* Förster. Eine Untersuchung. *Broteria*, 2 (1): 5-33.
- FÖRSTER, A. 1869. Über die Gallwespen. *Verhandlungen der Kaiserlich-Königlichen Zoologisch-Botanischen Gesellschaft in Wien*, 9: 337-374.
- HEBERT, P. D. N., CYWINSKA, A., BALL, S. L. & DEWAARD, J. R. 2003. Biological identifications through DNA barcodes. *Proceedings of the Royal Society of London, Series B: Biological Sciences*, 270: 313-321.
- KIEFFER, J. J. 1897-1901. *Monographie des Cynipides d'Europe et d'Algerie (André Species des Hymenopteres d'Europe & d'Algerie) Les Cynipides*. Hermann edit. Froment-Dubosclard, Paris, 687 p.
- MAISURADZE, N. L. 1961. Cynipid gall wasps (Fam. Cynipidae), pests on oaks in Lenkoran Zone. *Scientific Notes of the Azerbajdzhan State University*, 1: 21-30.
- MAYR, G. 1881. Die Genera der gallenbewohnenden Cynipiden. *Jahresberichte der Communal-Oberrealschule im I. Bezirke, Wien* 20: 1-38.
- MAYR, G. 1902. Ueber Nordamerikanische Cynipiden. *Verhandlungen der k.k. zoologisch-botanischen Gesellschaft in Wien*, 52: 287-290.
- MEDIANERO, E. & NIEVES-ALDREY, J. L. 2014. *Callirhytis cameroni*: a new species of oak gall wasp (Hymenoptera: Cynipidae: Cynipini) in Panama. *Florida Entomologist*, 97: 1710-1717.
- MELIKA, G. & ABRAHAMSON, W. G. 2002. Review of the World Genera of Oak Cynipid wasps (Hymenoptera: Cynipidae: Cynipini). P. 150-190 In: *Parasitic Wasps: Evolution, Systematics, Biodiversity and Biological Control* (eds. Melika, G. & C. Thuróczy). Agroiinform, Budapest.
- NICHOLLS, J. A., CHALLIS, R. J., MUTUN, S. & STONE, G. N. 2012. Mitochondrial barcodes are diagnostic of shared refugia but not species in hybridising oak gallwasps. *Molecular Ecology*, 21: 4051-4062.
- NICHOLLS, J. A., MELIKA, G., DEMARTINI, J. & STONE, G. N. 2018. New species of *Dryocosmus* Giraud gallwasps from California (Hymenoptera: Cynipidae: Cynipini) galling *Chrysolepis* Hjelmq. (Fagaceae). *Zootaxa*, 4532: 407-433.
- NIEVES-ALDREY, J. L. 1992. Revisión de las especies europeas del género *Callirhytis* Förster (Hymenoptera, Cynipidae). *Graellsia*, 48: 171-183.
- PÉNZES, A., TANG, C.-T., STONE, G. N., NICHOLLS, J. A., SCHWÉGER, S., BOZSÓ, M. & MELIKA, G. 2018. Current status of the oak gallwasp (Hymenoptera: Cynipidae: Cynipini) fauna of the Eastern Palaearctic and Oriental Regions. *Zootaxa*, 4433 (2): 245-289.
- PUJADE-VILLAR, J., BARBOTIN, F., FOLLIOT, R. & MELIKA, G. 2005. *Callirhytis erythrostroma* (Dettmer, 1933) and *C. erythrosoma* (Dettmer, 1933): are synonyms of *Callirhytis erythrocephala* (Giraud, 1859) or different species? (Hymenoptera, Cynipidae: Cynipini). *Butlletí de la Institució Catalana d'Història Natural*, 73: 61-70.
- PUJADE-VILLAR, J., HANSON, P., MEDINA, C. A., TORRES, M. & MELIKA, G. 2012. A new genus of oak gallwasps, *Zapatella* Pujade-Villar & Melika, gen. n., with a description of two new species from the Neotropics (Hymenoptera, Cynipidae, Cynipini). *ZooKeys*, 210: 75–104.
- PUJADE-VILLAR, J., CIBRIÁN-TOVAR, D., CIBRIÁN-LANDE-RAL, V., EQUIHUA-MARTÍNEZ, A., ESTRADA-VENEGAS, E. G., SERRANO-MUÑOZ, M. & LOMELI-FLORES, J. R. 2014. A new genus of oak gallwasp, *Melikaiella* Pujade-Villar Hymenoptera: Cynipidae: Cynipini, from the Nearctic region. *Dugesiana*, 21 (1): 1-29.
- STONE, G. N., ATKINSON, R. J., ROKAS, A., NIEVES-ALDREY, J. L., MELIKA, G., ÁCS, Z., CSOKA, G., HAYWARD, A., BAILEY, R., BUCKEE, C. & MCVEAN, G. A. T. 2008. Evidence for widespread cryptic sexual generations in apparently purely asexual *Andricus* gallwasps. *Molecular Ecology*, 17: 652-665.
- TANG, C. T., MIKO, I., NICHOLLS, J. A., SCHWEGER, S., YANG, M. M., STONE, G. N., SINCLAIR, F., BOZSO, M., MELIKA, G. & PENZES, Z. 2016a. New *Dryocosmus* Giraud species associated with *Cyclobalanopsis* and non-*Quercus* host plants from the Eastern Palaearctic (Hymenoptera, Cynipidae, Cynipini). *Journal of Hymenoptera Research*, 53: 77-162.
- TANG, C. T., YANG, M. M., STONE, G. N., NICHOLLS, J. A. & MELIKA, G. 2016b. A new *Plagiotrochus* Mayr oak gall wasp species from Taiwan (Hymenoptera: Cynipidae: Cynipini). *Journal of Asia-Pacific Entomology*, 19: 531-536.
- TANG, C. T., MELIKA, G., NICHOLLS, J. A., YANG, M. M. & STONE, G. N. 2020. A new *Cycloneuroterus* Melika & Tang oak gallwasp species (Hymenoptera: Cynipidae: Cynipini) associated with *Lithocarpus* (Fagaceae) from Taiwan. *Proceedings of the Entomological Society of Washington*, 122: 184-196.
- WELD, L. H. 1922. Notes on cynipid wasps, with descriptions of new North American species. *Proceedings of the United States National Museum*, 61: 1-29.
- WELD, L. H. 1926. Field Notes on Gall-inhabiting Cynipid Wasps with descriptions of new species. *Proceedings of the Entomological Society of Washington*, 68 (10): 1-131.
- WELD, L. H. 1952. *Cynipoidea* (Hym.) 1905-1950. Ann Arbor, Michigan (privately printed): 1-351.